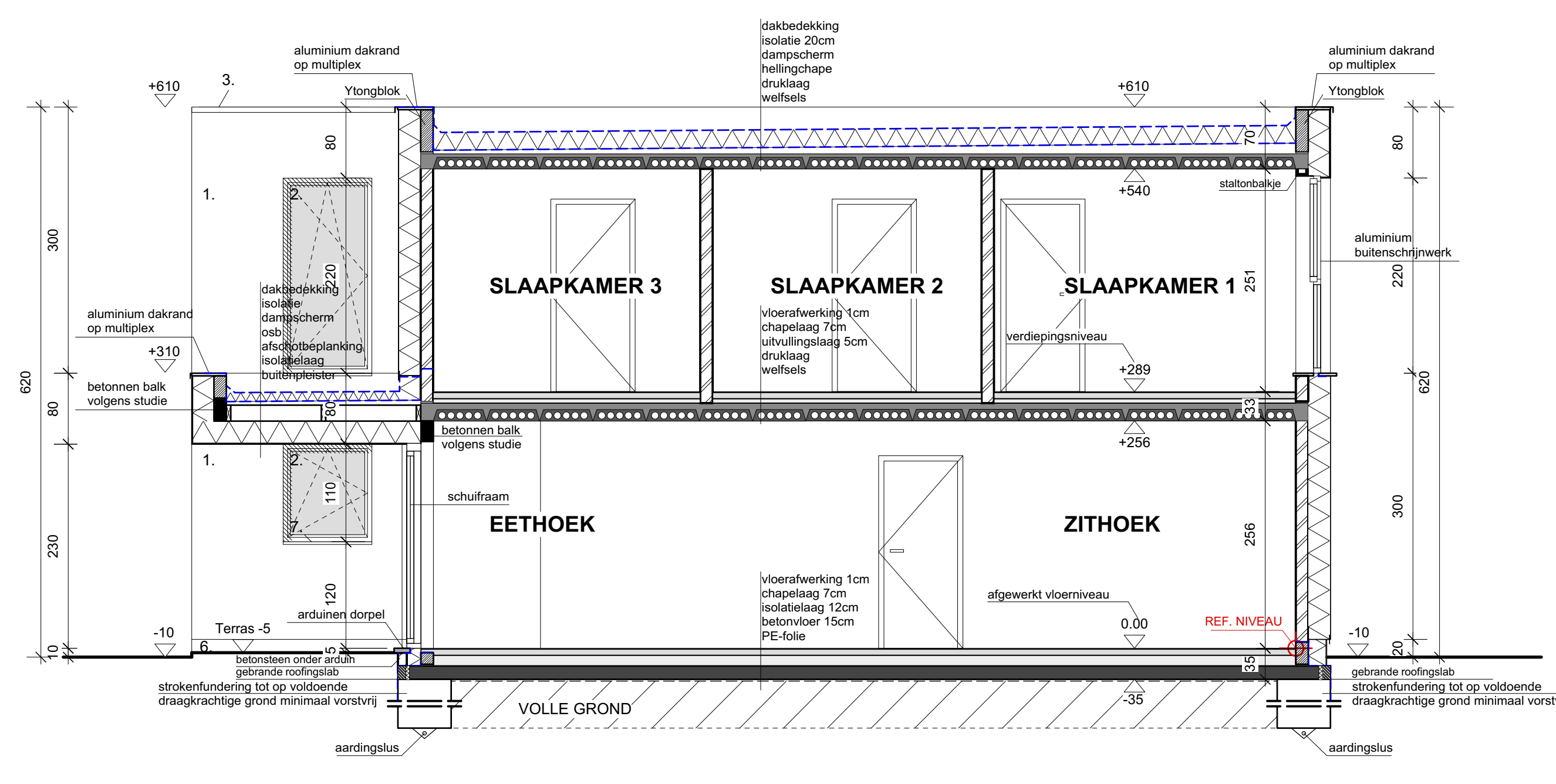
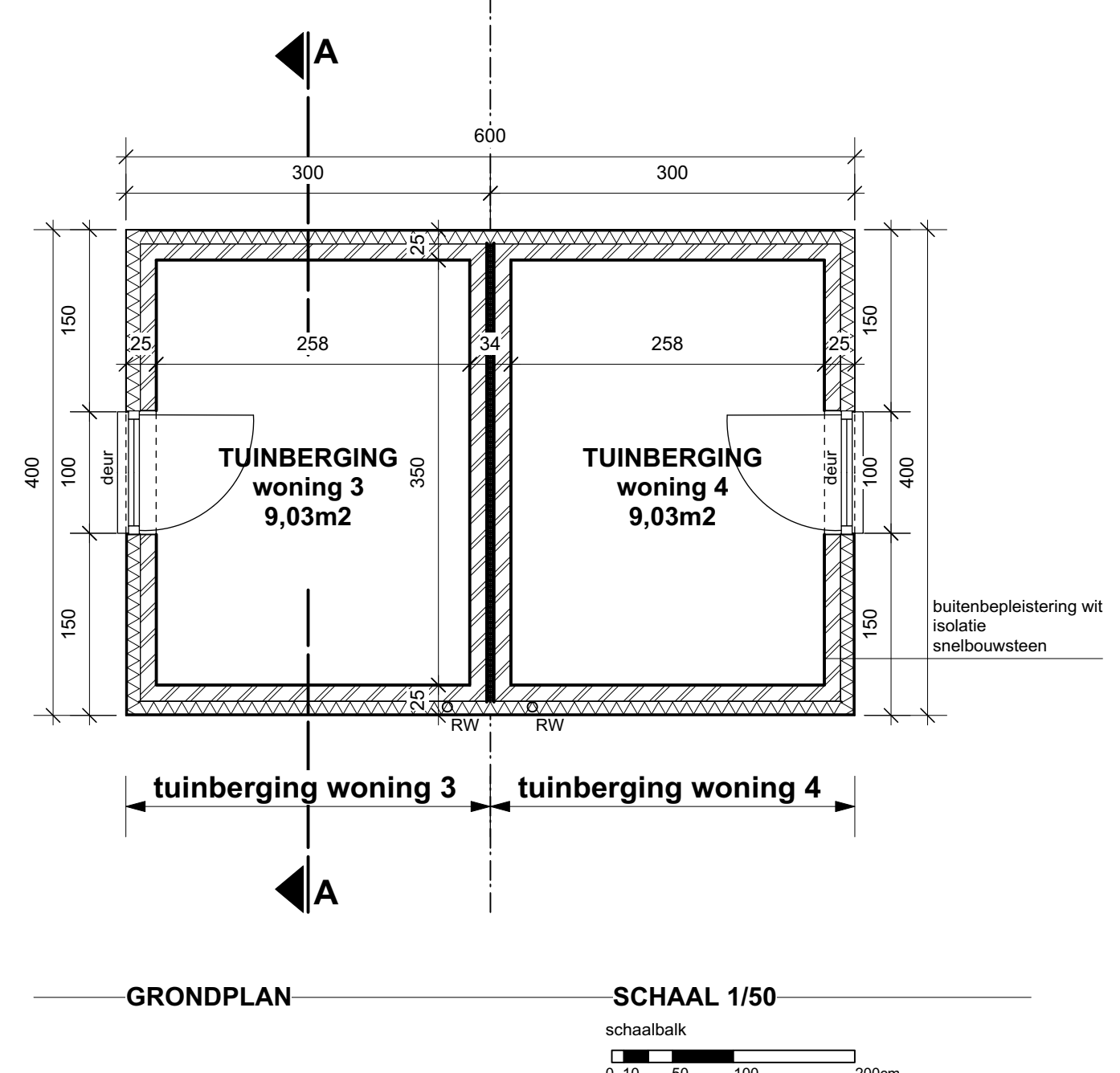


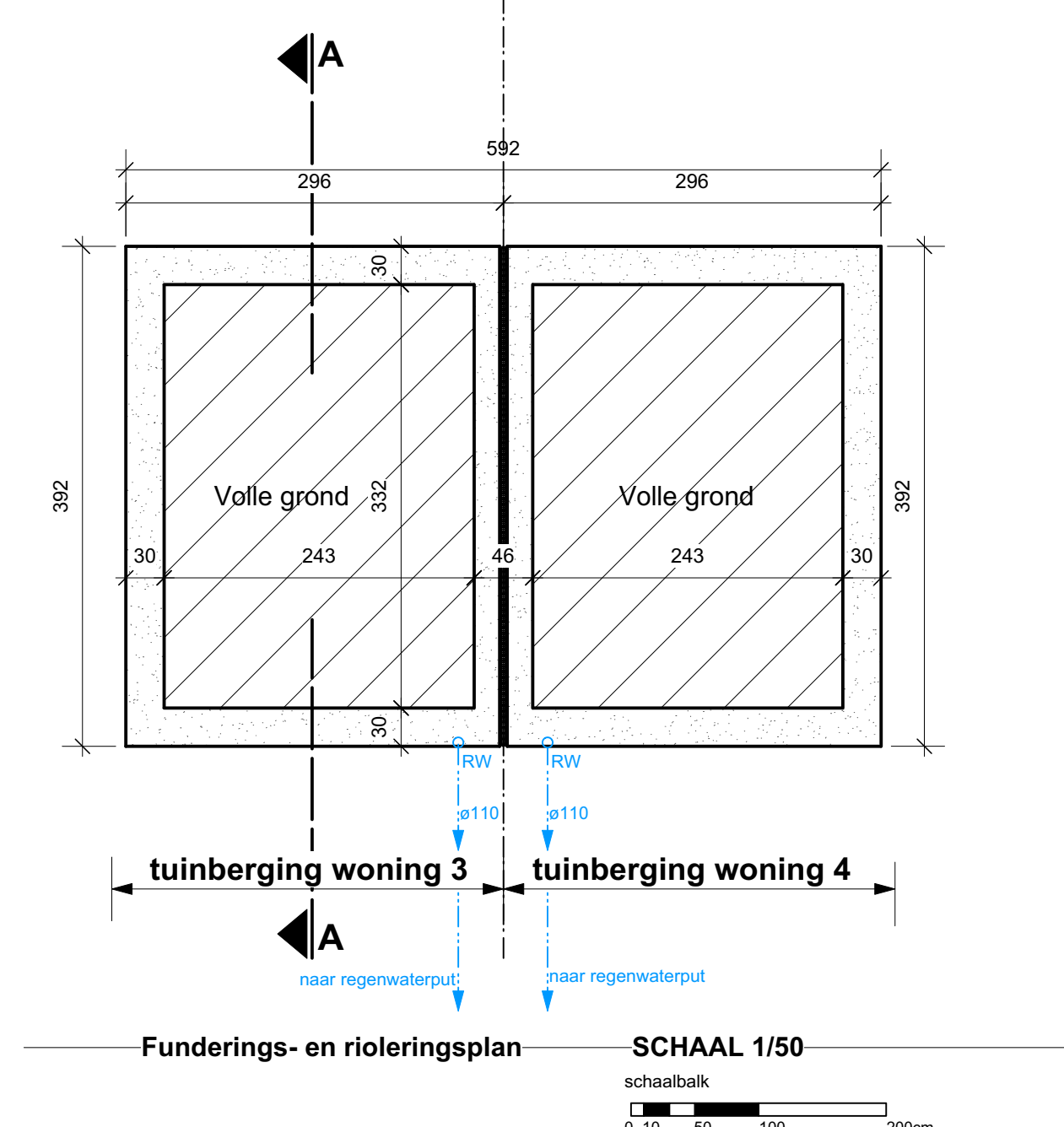
SNEDE BB **SCHAAL 1/50**



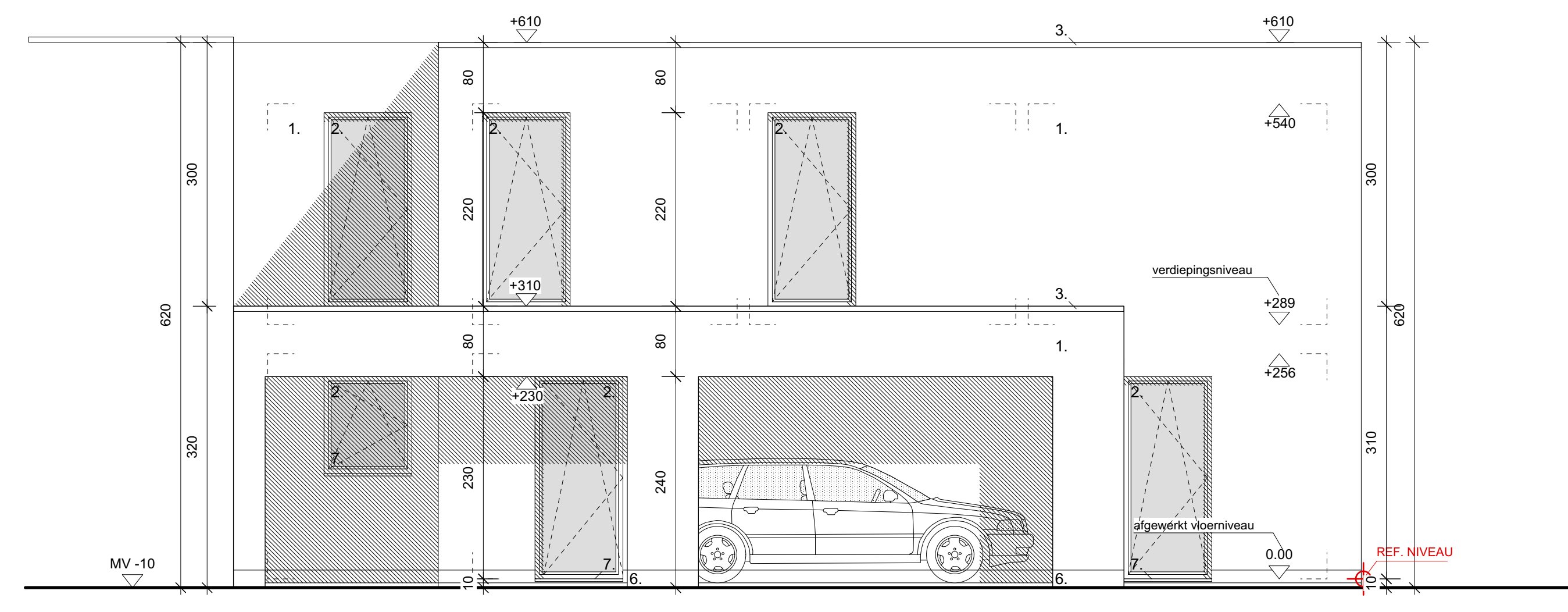
SNEDE AA **SCHAAL 1/50**



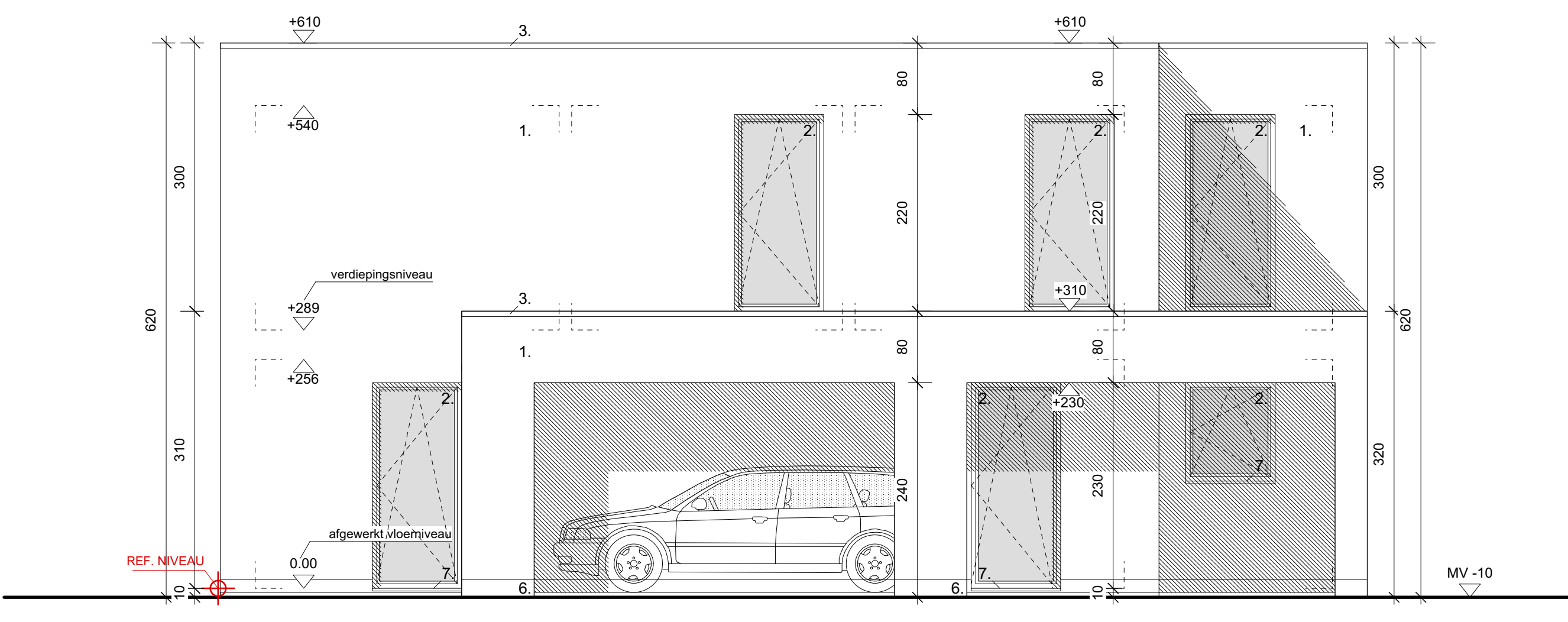
GRONDPLAN **SCHAAL 1/50**



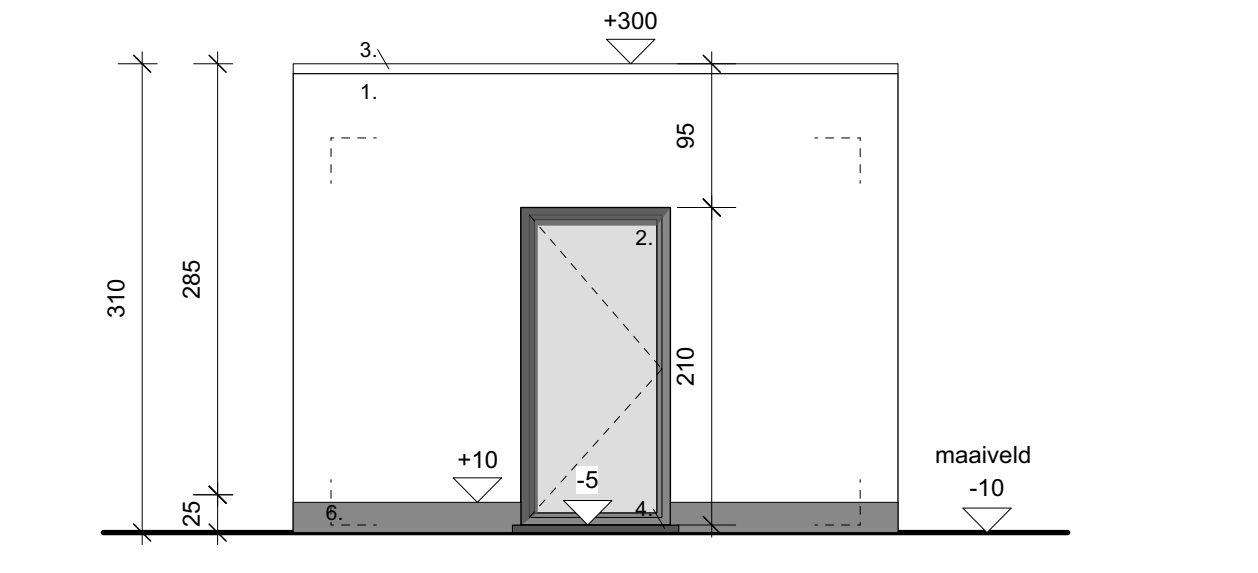
Funderings- en rioleringsplan **SCHAAL 1/50**



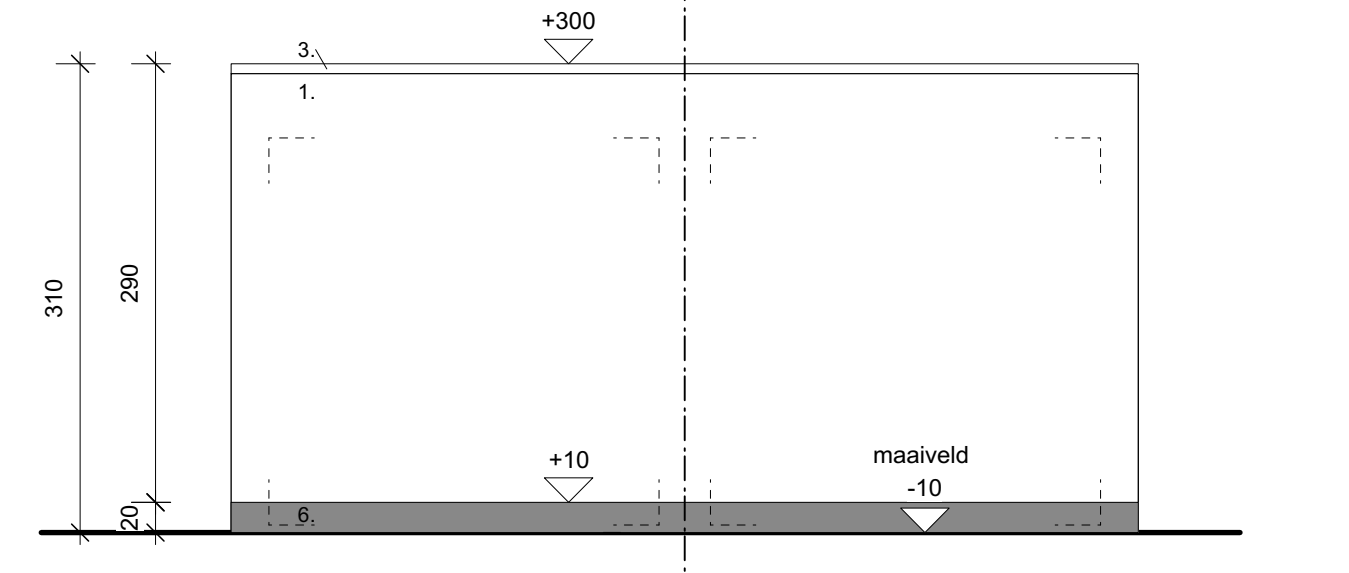
LINKERZIJGEVEL **SCHAAL 1/50**



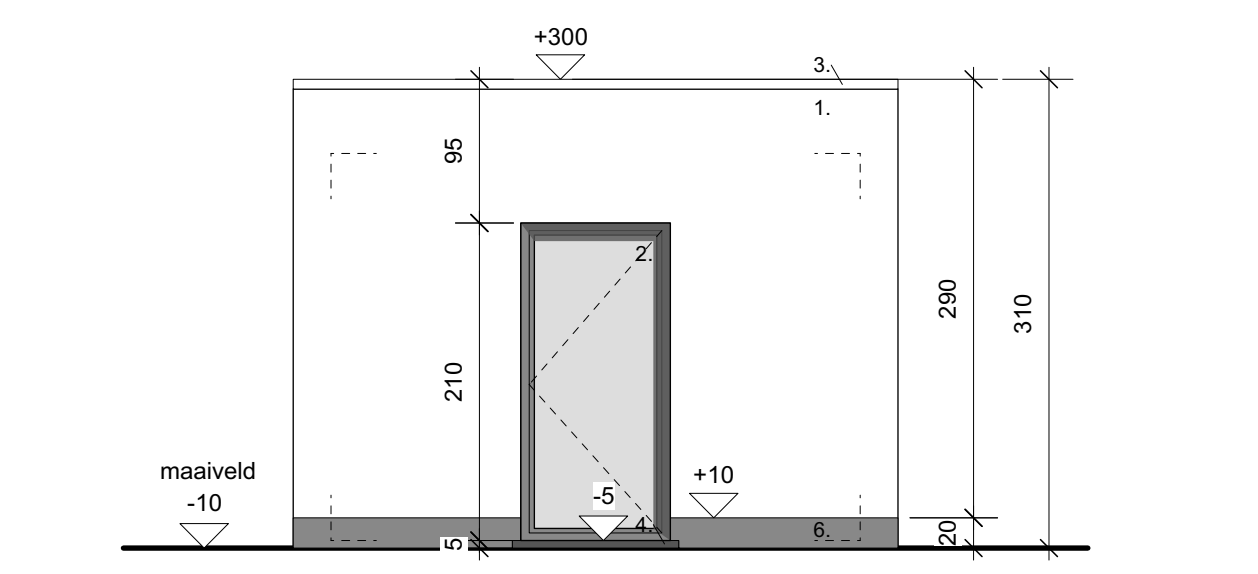
RECHTERZIJGEVEL **SCHAAL 1/50**



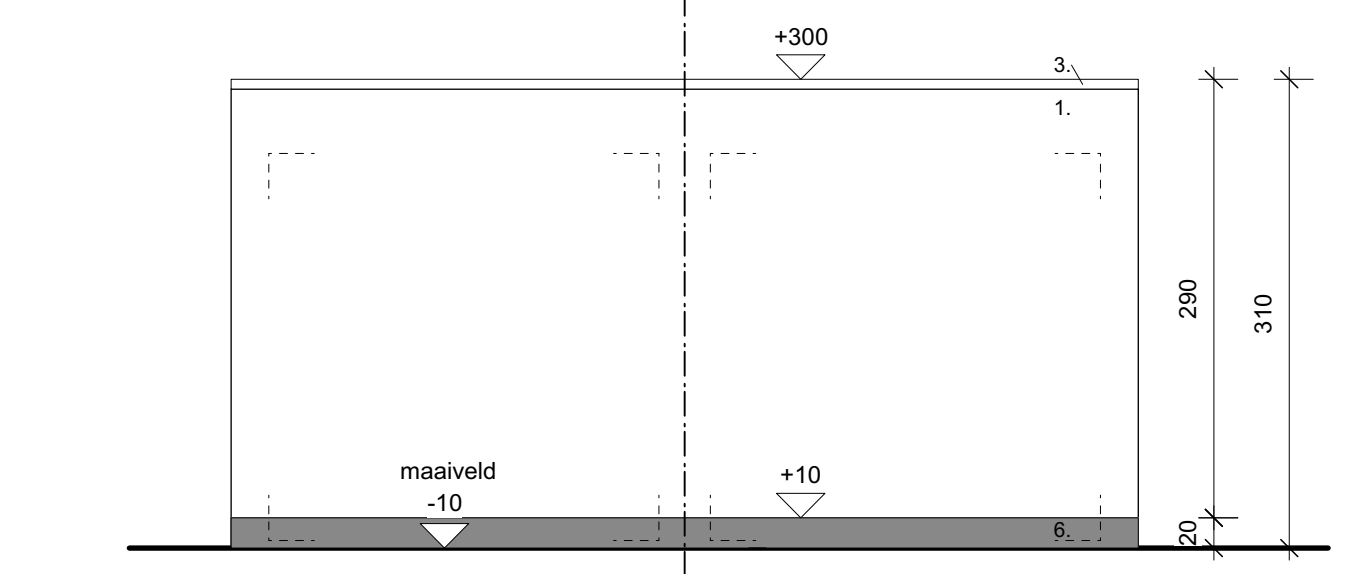
LINKERZIJGEVEL **SCHAAL 1/50**



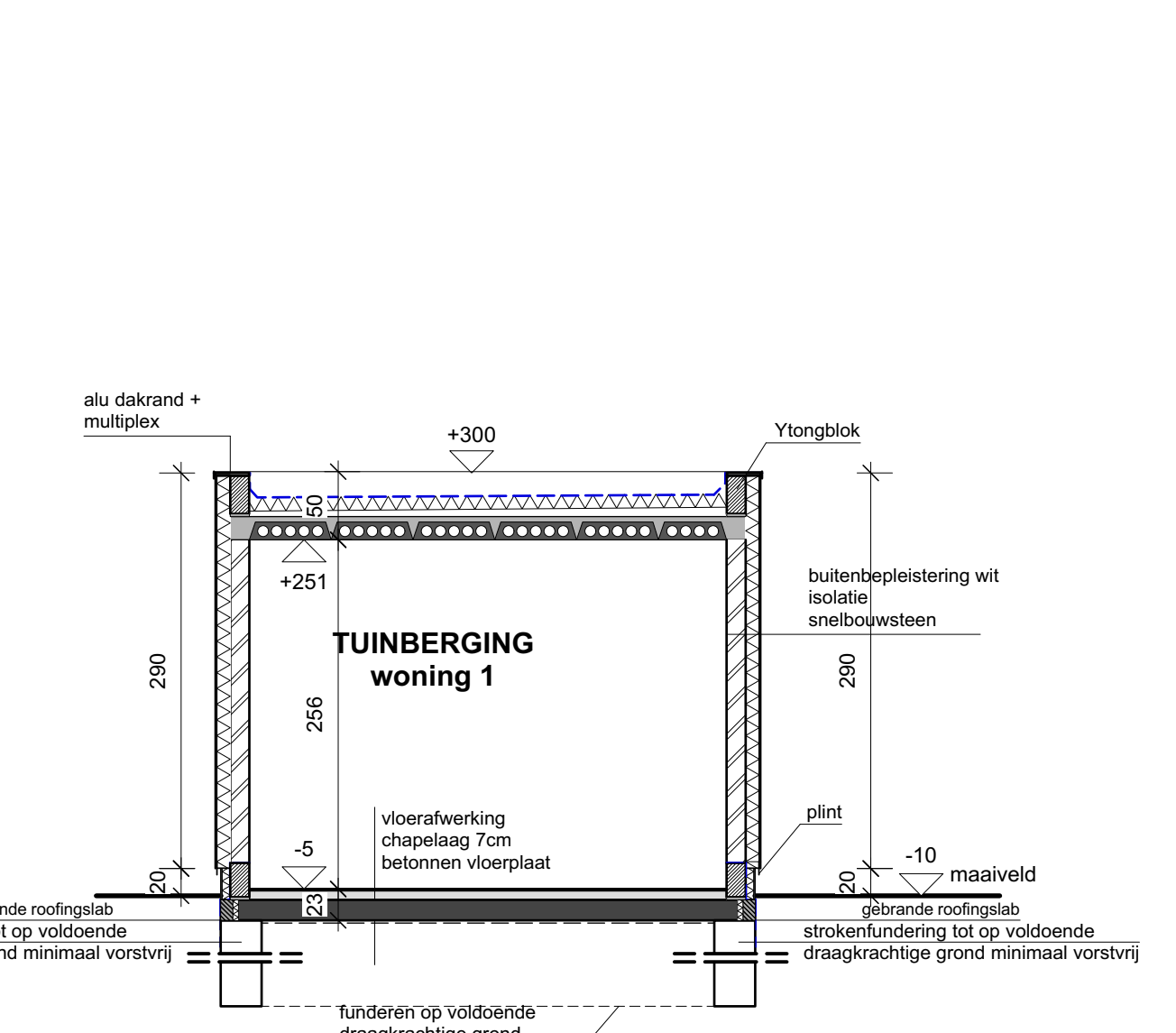
VOORGEVEL **SCHAAL 1/50**



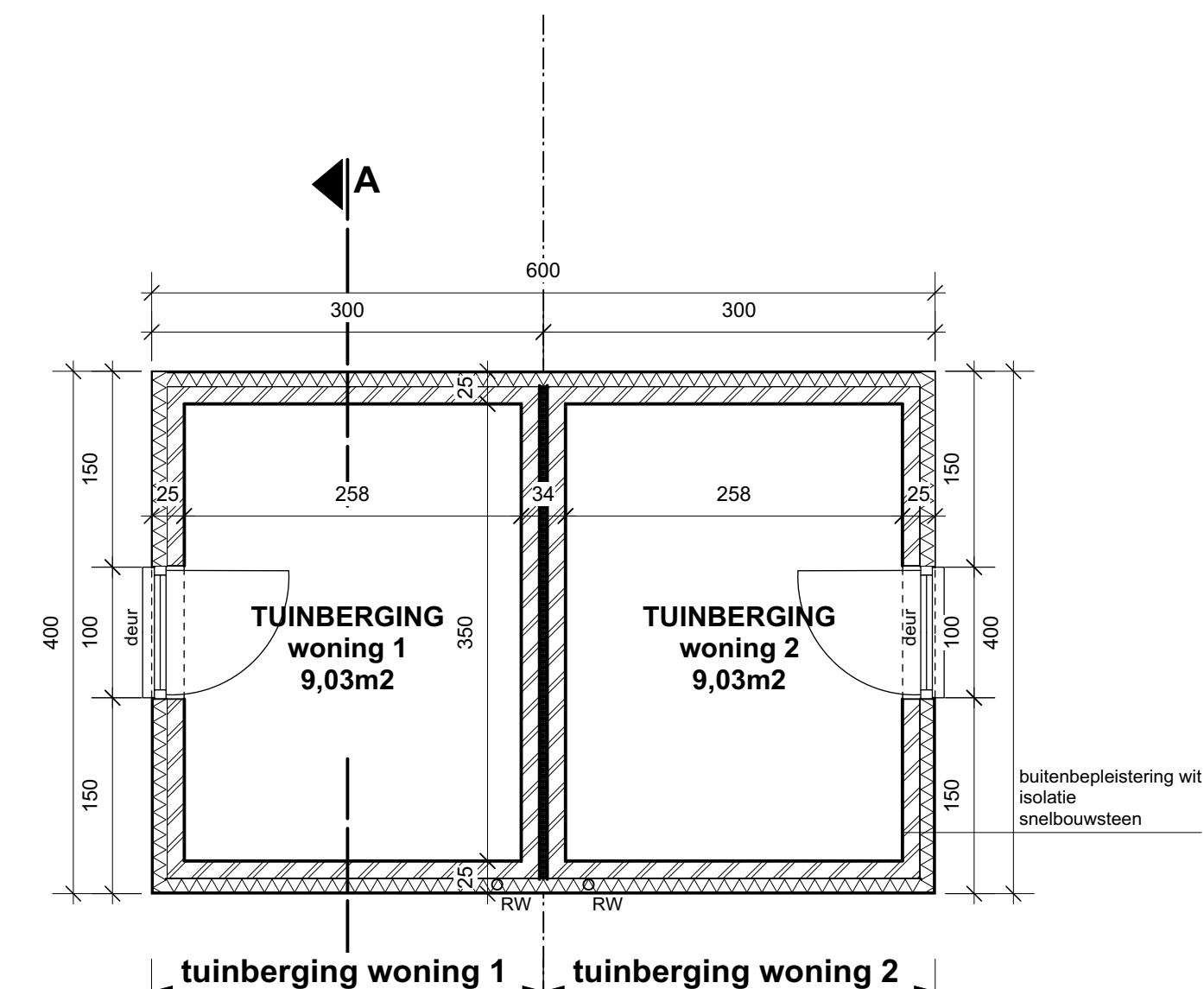
RECHTERZIJGEVEL **SCHAAL 1/50**



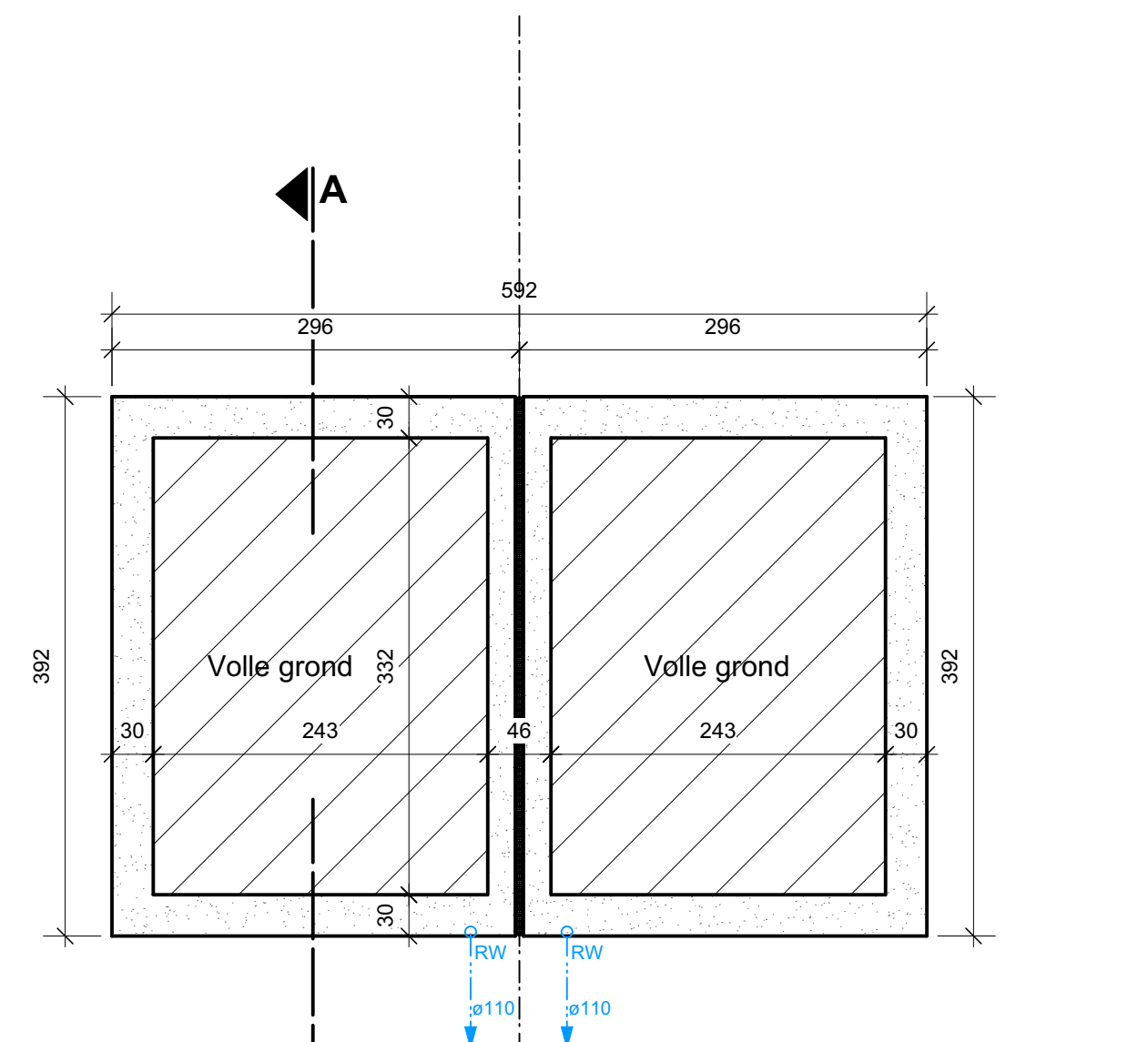
ACHTERGEVEL **SCHAAL 1/50**



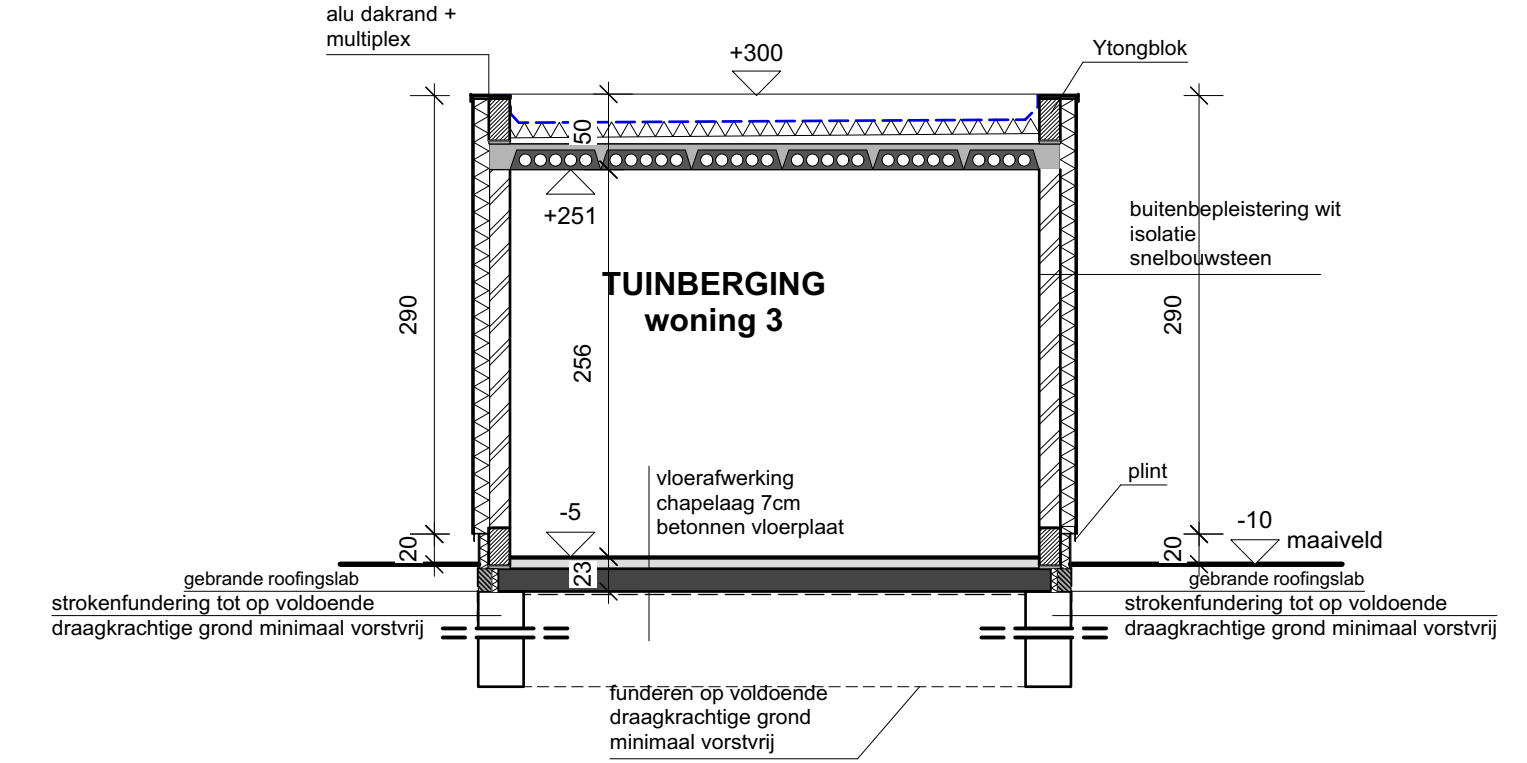
SNEDE AA **SCHAAL 1/50**



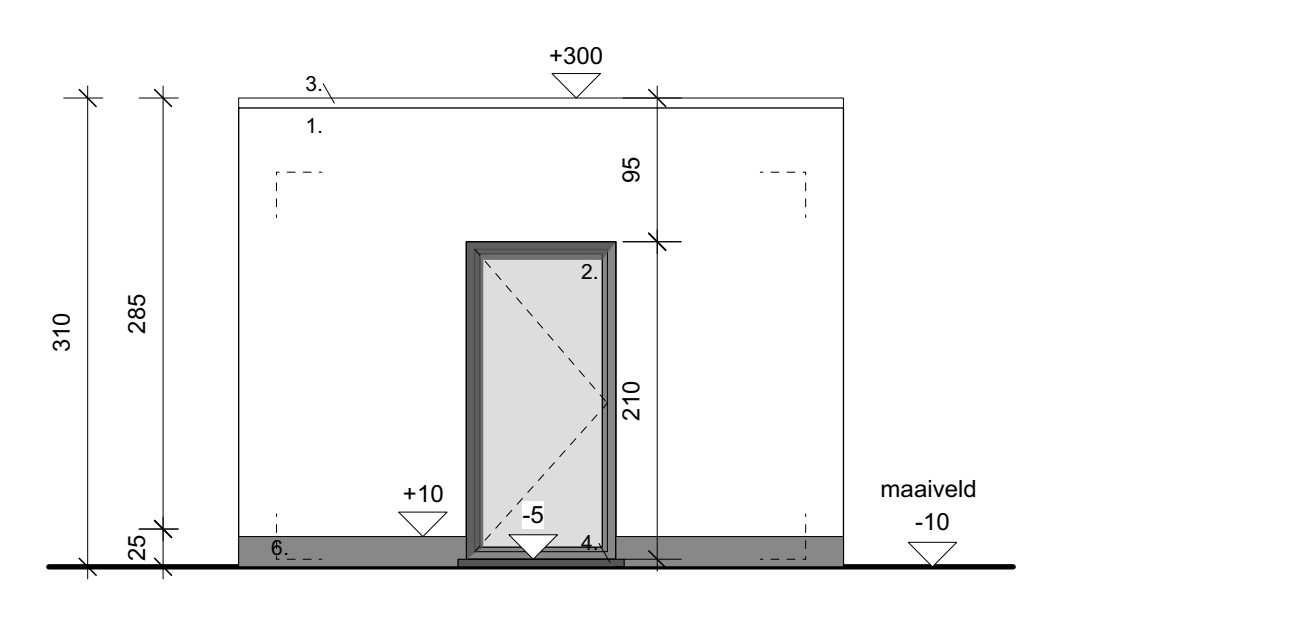
GRONDPLAN **SCHAAL 1/50**



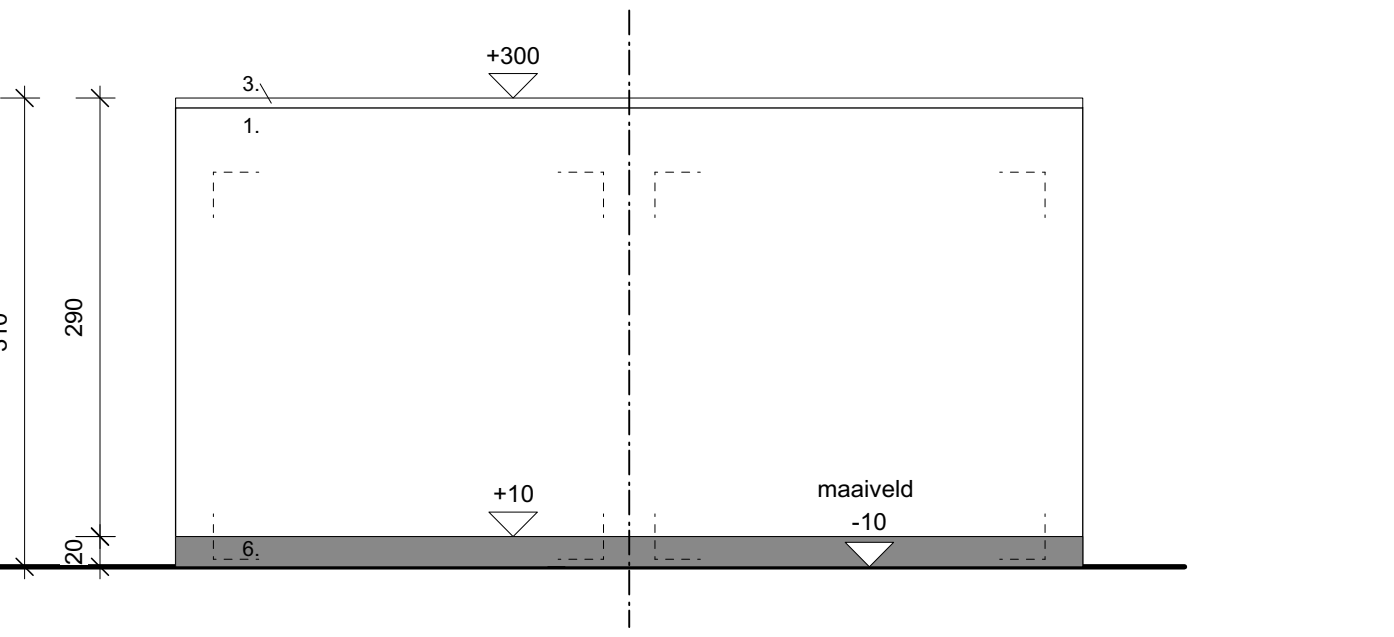
Funderings- en rioleringsplan **SCHAAL 1/50**



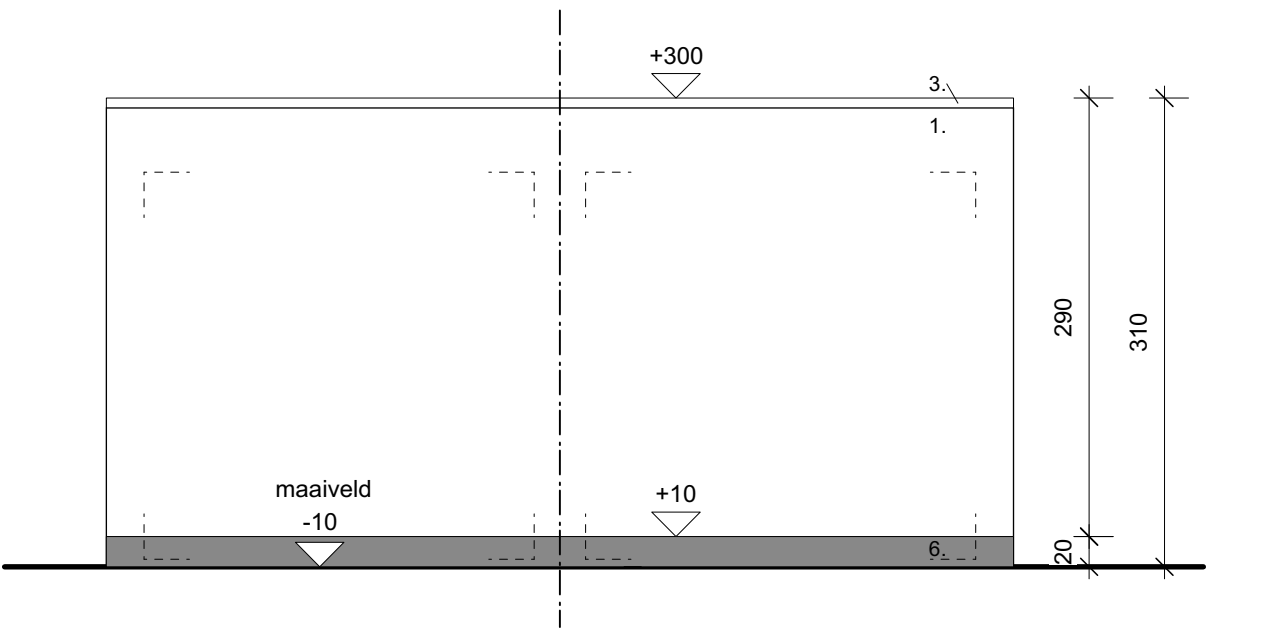
SNEDE AA **SCHAAL 1/50**



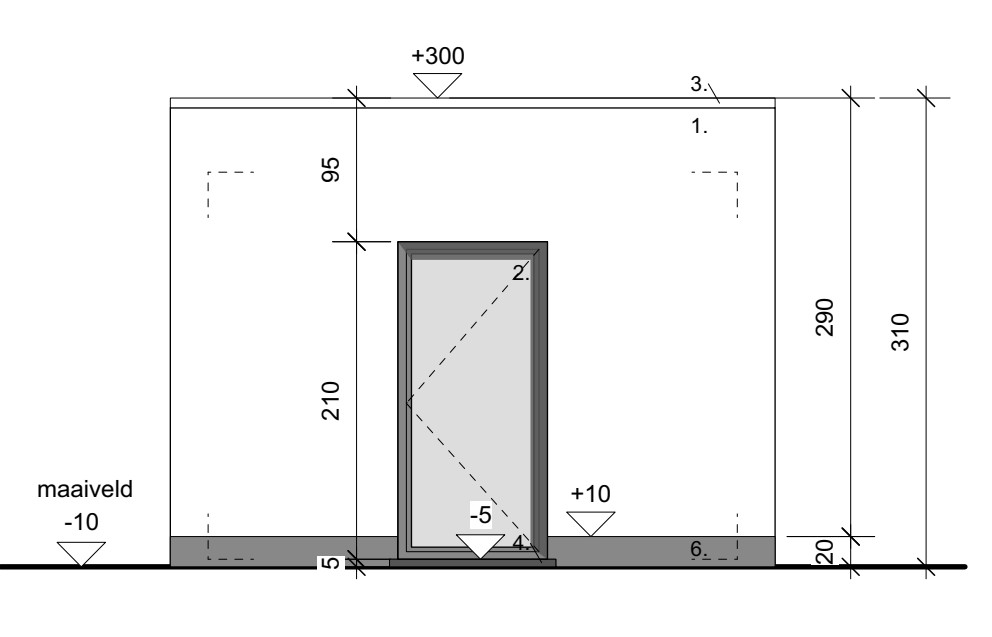
LINKERZIJGEVEL **SCHAAL 1/50**



VOORGEVEL **SCHAAL 1/50**



ACHTERGEVEL **SCHAAL 1/50**



RECHTERZIJGEVEL **SCHAAL 1/50**

MATERIALEN

- 1. buitenplaatjes wit
- 2. aluminium buitenschrijfwerk (zwart-grijs)
- 3. aluminium dakrand
- 4. aardenen dorpel
- 5. houten gevelafwerking
- 6. granspeelster
- 7. aluminium dorpel

LEGENDE

- gevelsteen
- betonnen muren uit snelbouwsteen
- betonvloer op volle grond
- volle grond
- gewapend betonvloer en betonbalken
- Ytongblokken

provincie **Limburg**
gemeente **Hamont - Achel**

Bouwen van 4 woningen met tuinbergplaats

gelegen	Mereistraat zn , 3930 Hamont - Achel
kadaster	Afdeling 1 , sectie C , nr. 1094T
bouwheer	Miquel Van Roosmalen 3930 Hamont-Achel
architect	MATEN Architecten Broesveldstraat 1, b.9 3910 Neerpelt roeland@maten-architecten.be GSM: +32 477 583 380 francis@maten-architecten.be GSM: +32 476 641 563

UITVOERINGSPLANNEN WONINGEN
Sneede AA
Sneede BB
Linkerzijgevel
Rechterzijgevel
Legende en materialen

UITVOERINGSPLANNEN TUINBERGPLAATSEN	MATEN Architecten Palmer Roeland Francis Schurmans architect
U.3.1	1/50
	20.08